

April 13, 1982

Apr 1982



On hand for the official sod-turning ceremony recognizing the expansion of the Young Men's Christian Association — Elmwood-Kildonan Branch, 454 Kimberly Avenue held April 7, were — (left to right) Justice Scott Wright, president of the board of governors of the Metro YMCA; Dave Moran, chairman of the YMCA Elmwood-Kildonan branch; Anne Jorowski, city councillor for the Miles MacDonnell ward; Al Rouse, chairman of the River East school board; Jim Bakken, who took part in the 1962 sod-turning ceremony; Vic Schroeder, member of the legislature for the constituency of Rossmere; Don Phallen, general secretary of the YMCA; Olive Alderson, president of the Eager Beavers Fitness Club; and Margot Melanson, president of the youth leader core for the branch.

— photo by Vienna Badiuk.

## Commencement of YMCA capital expansion program

At a sod-turning ceremony on Wednesday, April 7, Mr. Justice Scott Wright officially started a major expansion program of the Young Mens Christian Association of Winnipeg. Justice Wright, president of the YMCA, indicated that three community bran-

ches will benefit from the 2.8 million dollar program. The Elmwood-Kildonan Branch on Kimberley Avenue is the first stage of the construction program which will see a 62' x 88' gymnasium with an elevated indoor jogging track and 3 racquetball courts added to the current facility which features a 25 yard swimming pool. Later stages in the expansion program will add similar features to the South Family Branch in St. Vital and the St. James-Assiniboia Unit on Ferry Road.

Justice Wright said that architects for the project are MacDonald, Cockburn, McFeetors and the general contractor for the Elmwood-Kildonan facility is Malcom Construction Ltd.

The new unit will permit a wider range of options for all program areas from pre-schoolers to older adults and expand the participatin in Y programs to over 5,000 persons each year.

The new facilities in Elmwood-Kildonan Y are expected to be open late in 1982; swimming and other programs currently operating will continue during the construction period.

## yachok on MAST

committees.

Prior to being elected as vice-president, Justice Marshall's involvement with the



Nov 1982



## Elmwood-Kildonan YMCA celebrates new addition

Sixteen month old Stephen (left), son of Denis Carpenter seems more interested in flashing camera lights than the ceremony which saw the opening of the Elmwood-Kildonan YMCA addition officially recognized. Dignitaries in attendance at the opening held November 21 included: (left to right) Rob Nickel, president of the Elmwood-Kildonan Y; Don Phalem, general manager of the Winnipeg Y; Pearl McGonigal, Lieutenant-Governor of Manitoba; Justice Scott Wright, president of the Metropolitan Winnipeg Y; Bill Blaikie, member of parliament for Winnipeg-Birds Hill, Vic Schroeder, member of the legislature for Rossmere, Anne Jorowski, countillor for Miles Macdonell and Reverend Bob Jacobs, pastor of Grace Lutheran. Kim Strachan, executive director of the Elmwood-Kildonan Y noted that the \$800,000 addition contains a full gym, running track and three handball/racquetball courts, with the total capacity of the branch now being about 2000 members. Currently the branch has a membership of 1000.

— Photos by Vienna Badiuk

from  
wh  
gyr  
F  
cal  
Mc

Mc  
ce  
wi  
na

C  
at

to  
up  
ed  
for  
lot  
T  
be  
an  
in  
cle  
pr  
for

by Karen Vopnfjord

Kim Strachan is the executive director of the Elmwood-East Kildonan YMCA. The following article is about this YMCA and Strachan's involvement with it; past, present and plans for the future.

The Elmwood-Kildonan YMCA has a history dating back to the 1950's. Programs were operated out of the Washington Street Mission, and prior to that a house on Brazier Avenue and Martin Street.

The new facilities at 454 Kimberley Avenue were built in 1963. The YMCA then consisted of only a pool, lockers, exercise room, sauna and preschool gym.

Needing to provide more programming for the area, in 1978 through '79, the YMCA went on a capital campaign. This led to the 1982 additions of a new gymnasium, an indoor jogging track and racquetball

courts.

Strachan began his career with the YMCA in Regina, moving on to the Moncton YMCA in New Brunswick. His background being in aquatics and youth physical education, it's not surprising that the EK YMCA has the largest youth development program of all the Winnipeg Y's.

Strachan feels that it's noteworthy that many school groups use the YMCA facility: Donwood, Angus McKay, Munroe Junior High, Prince Edward, Miles Macdonell Collegiate and St. Alphonsus schools being among them.

The East Kildonan Baptist, Seventh Day Adventist, Grey Street United and Grace Lutheran churches, the Eager Beaver Fitness Club and also people from Lorette, Manitoba come in regularly, said Strachan.

The EK YMCA Mens' Club do much quiet fund raising to aid good works within the facility and the community at large,

Strachan noted.

March 1985

He pointed out that the EK YMCA looks forward to providing more community services in the future, such as potentially developing a nursery school and expanding much-needed seniors programming; as current classes are very popular. There are also plans to work with the Community Service Order, acting as the community resource centre for North-East Winnipeg.

Currently the EK YMCA has four full-time professional program staff and over 200 trained volunteers. New volunteers are needed in: the preschool department, swim and gym classes for children of all ages, adult fitness, dance and aerobic classes.

To register for the March to June program cycle or for further information call 668-8140.

# New Y parking lot will ease congestion

By Wanda McConnell  
Herald Editor

**K**imberly Avenue YM-YWCA patrons soon will no longer get most of their exercise just walking from their car to the building.

A new parking lot coming later this spring means people won't have to park blocks away. It also means fewer cars will be parking on streets around the Y and Miles Macdonell Collegiate.

The 60-car lot is to be built by the Y on River East School Division property. It will be located between the high school and the Y and will front on Kimberly. It will be used by students dur-

ing the day, and by Y patrons evenings and weekends.

"People are parking everywhere right now and they're driving around trying to find a space. That can be frustrating and we want coming to the Y to be a pleasant experience," says general manager Jeff Marshall.

Parking around the facility has always been a problem. However, it's gotten worse in the last three years since membership at the Y shot from 1,000 to 4,000. "And it's still growing," Marshall adds.

To address the issue, the Y approached the River East School Division and offered to build and maintain the

parking lot on the division's property in exchange for using the lot evenings and weekends.

As well, the Y offered to construct an outdoor basketball court and a second tennis court and tennis hitting wall on the school yard.

Marshall estimates the Y is investing about \$70,000 in the total project.

The school board approved the deal last October and since then, the Y has been working through zoning matters with the city. Marshall says the Y should have the all-clear from the city in the next few days to proceed with construction.

A gravel base will be put down early this spring and

the lot will be used that way until the ground thaws. Then, says Marshall, construction will start on the final asphalt parking lot.

A new wooden fence will also be built along Kimberly Avenue. Access to the parking lot will be from the Y property.

Miles Mac principal Garry Bowles says the new parking lot will be a win-win situation. It helps the Y, the school and the neighbourhood.

Students will no longer have to park on residential streets, which not only was a bother to property owners but also problematic for students.

The city had imposed a two-hour parking limit on streets. It had also hired "a most efficient and dedicated

commissionaire" to enforce it, says Bowles.

Consequently, students were always getting parking tickets or leaving class to move their cars.

"Now everybody wins. The community has more free space on the street in front of their homes and our kids get low-cost parking," the principal said.

Bowles says one glitch was what to do about a ball diamond that neighbouring Melrose Park Community Centre used for children's baseball. It was located where the new parking lot is to go and will be moved to Neil Campbell School.

The school didn't use the space for anything but shot-put practice.

## Proceed with caution

**M**anitoba Conservation is advising the public of unsafe ice conditions on the Red River Floodway and provincial drainage ditches.

People are advised to be careful when operating snowmobiles and other vehicles on waterways. Snow cover has produced an insulating effect, resulting in thinner than usual ice in many regions.

Department officials say people using the Floodway and other slopes for sliding, snowboarding and cross-country skiing should use caution to avoid injury.

Heart  
Hugger

from  
\$19.95

146  
al Florist"  
LISTS.com

JARY BARGAIN BONANZA • FEBRUARY BARGAIN BONANZA •

*Your Marketplace*

**SALE DATES:  
FEBRUARY 7 - 10, 2001**

FEBRUARY BARGAIN BON

# YMCA-YWCA expansion a 'good news' story

By Andrew Buck

A lot has changed at the Y M / Y W C A since the Village People recorded their infamous disco hit of

the same name.

But unlike the disco music genre, the YM/YWCA has made a successful comeback from a near-death experience. That success has translated into the expansion

and general facelift of the Elmwood-Kildonan branch at 454 Kimberley Ave.

"We're adding a family pool, which has a shallow depth that's particularly good for parents with young children," said YM/YWCA of Winnipeg CEO Dave Young. "We're also adding a parking lot with about 80 spaces."

The branch's membership dipped to 1,200 people three years ago. Across the city, other YM/YWCAs were also suffering from sagging attendance figures.

That was "too low," said Young.

The branch has nearly tripled its numbers in three years, to 4,200 members. Young credits the increase to a number of factors.

"There's been better service, better programs, better facilities, a whole series of things. Now that we're

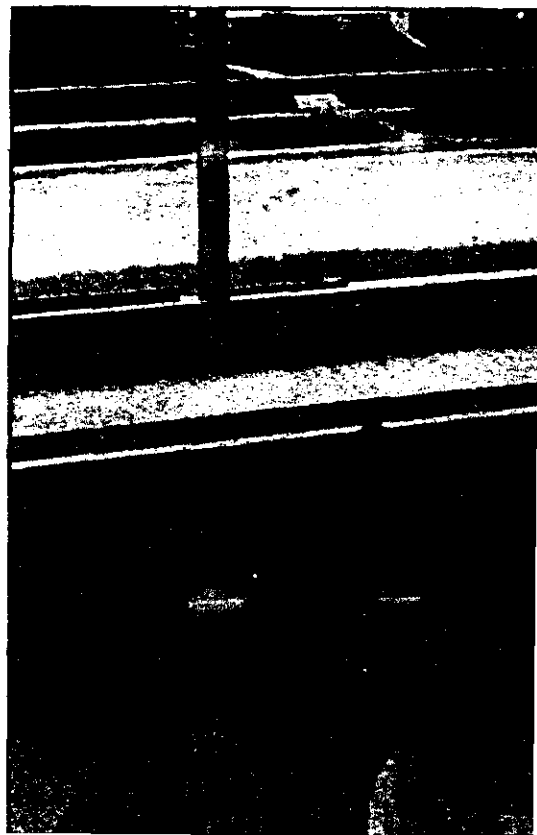
growing, we have more resources and are able to expand."

The new pool will complement the existing pool, racquetball courts, running track, gym and fitness centre.

Construction on the pool is nearing an end and Young said he expects it to be open to the public by Sept. 1.

The swell in membership has also provided other benefits for the branch, which opened its doors in 1963. A slide and whirlpool have been added within the past few years, and the branch itself has been renovated both internally and externally.

"We've done it purely from our own internal funds," Young said. "When it's all said and done, we'll have spent about half a million dollars. It was a decision the board made be-



**Bleber Securities Inc.**  
A Manitoba Full Service Investment Firm

**\*9.5%**

**STREAMS III BLUE CHIP TRUST**

paid monthly, principal protection

call **John Nunn**

at 946-0297 or 1-800-205-9070.

\*Subject to change

Member of CIPF

RRSP Eligible

**FREE**

your indoor air quality, the company to turn to is **Advance Robotic Duct Cleaning**. The fact that business has more than doubled for the six-year-old bonded company in the last year shows that more and more Manitobans are becoming aware of its reputation as one of the best duct cleaning companies in the business.

At the same time that the dust and particles are being sucked out of your ductwork, our brushes loosen up the dirt stuck to its walls. Advance removes a much higher percentage of dust, allergens and pollutants than

to vacuum the duct cleaning so that customers can see the results. Advance has been called on by numerous industries, schools, hospitals, day cares and seniors homes - where clean air is of particular concern - both inside and outside Winnipeg.

The work is carried out by polite, well-trained professionals who are very careful about leaving your house neat and tidy.

If you find that there is more dust in your house than usual, or if your asthma and allergies are acting up, these are signs that it's time to clean the debris out of your ductwork.

## ADVANCE ROBOTIC DUCT CLEANING

**Ph. 284-6390**

**COUPON  
SAVE \$15<sup>00</sup>**

**OFF FURNACE BLOWER CLEANING**

LIMIT ONE COUPON PER CUSTOMER • EXPIRES SEPT. 15/01

VISIT OUR WEBSITE @ [www.advancerobotic.com](http://www.advancerobotic.com)

**YOURSELF**

**FREE**  
Installation Seminars

**SIDING**

PAVING COLORS  
PAINT COLORS

PAINT COLORS

**NEW CEDAR SERIES**  
*The Real Look of Wood*

**RO Centre LTD.**

Winnipeg, MB

Monday to Friday 8am - 5pm  
Saturday 8am - 4pm

Ph. 204-237-4300 Fax 204-237-9972

**The new pool at the Elmwood-Kildonan YM-YWCA should be ready by the beginning of September, says CEO Dave Young.**

**Aug 2001**

cause of growth and participation."

The pool itself is in line with the Y's focus on families. It's 18 by 24 feet and will be shallower and warmer than the main pool.

"It's only two-and-a-half feet deep. If you're a four-

year-old you can stand on the bottom. It will be great for teaching three to five-year-olds how to swim."

The pool also contains therapy jets and a ledge that will provide parents with a whirlpool atmosphere while they watch their children swim. Another benefit, said Young, is the branch's ability to hold timed swims.

In the past, families with children with different swimming capabilities might have had problems getting all their children's classes scheduled at the same time. The extra pool space will solve this problem, allowing children in different classes to swim at the same time.

"It means only driving to the pool once instead of three times."

The branch is truly getting a new image, said Young, who called the Y's turnaround a "good news" story. It's also good news for the community, which will soon have a bigger and better facility in its own backyard.

**D  
R  
A  
I  
N  
A  
G  
E  
S  
Y  
S  
T  
E  
M  
S**

## BASEMENT WATER PROBLEMS?

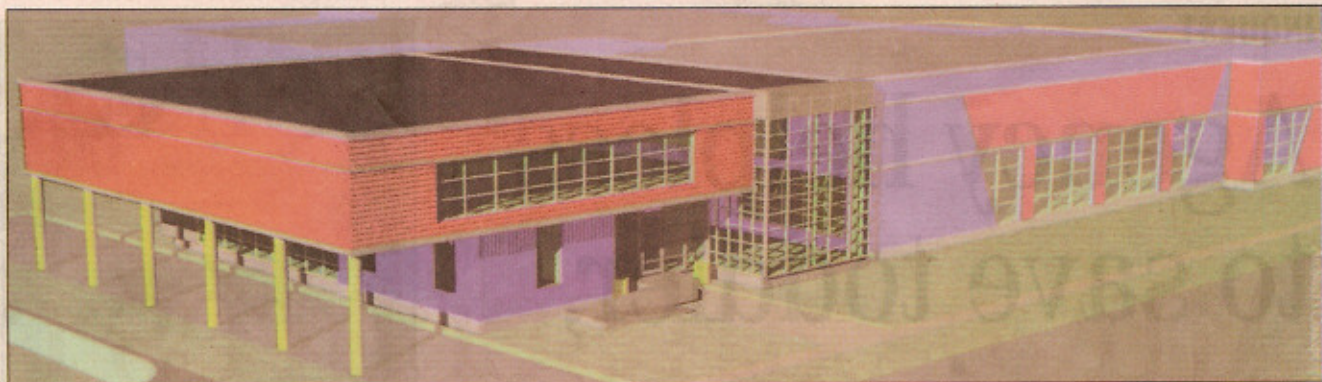
**The PROVEN**

Solution to  
Basement Seepage  
and Preventing  
Foundation  
Damage!

**CALL 897-7173**

**FOR A  
FREE ESTIMATE**

**Drainage  
Systems**



This is an architect's rendering of what an expanded East Kildonan Y would look like.

# YM-YWCA plans \$1.5-M expansion for E.K. branch

By Aldo Santin

**T**HE YM-YWCA is proposing a \$1.5-million expansion of the East Kildonan Y, which has seen its membership grow more than 800 per cent in the last eight years.

Dave Young, YM-YWCA CEO, said once required zoning approvals have been obtained from city hall, construction will start in July on a project that will increase the 454 Kimberly Ave. facility's square footage from 34,000 square feet to 43,000 square feet and add 40 additional parking stalls.

"We've been planning this for two or three years and we're at the point now where we're going forward," Young said.

The project includes adding 2,400 square feet on the ground floor, 6,800 square feet on the second floor and renovating 2,800 square feet of existing space.

Young said he's expecting a smoother reception from area residents — compared to strong neighbourhood hostility to a plan to expand the south St. Vital Y.

"We had a smaller expansion four years ago and the residents supported it and I expect we'll get the same support this time," Young said.

Architectural drawings are on display in the East K branch lobby. Staff held an open house last night to answer questions and a second open house is set for March 11, 10 a.m. to 2 p.m.

Young said Winnipeggers have embraced the Y philosophy, with its membership across the city rising dramatically from 14,000 five years ago to over 38,000 members today. A new branch was built in west Winnipeg on Portage Avenue. The East Kildonan Y has seen similar growth, he said. Eight years ago, the facility had a membership of 1,000 people; that climbed to about 3,000 members five years ago. Today, membership there is at 8,600.

"We're successful because we offer a range of programming at prices that are family-friendly," Young said.

Young said construction would start in July, when membership activity falls off for the summer. The project should be completed in December. During construction, the main lobby will be closed, he said, and members

will have to use a rear entrance near the gym.

The project was designed by the local firm Smith Carter Architects and Engineers. The Kimberly branch is located on a small parcel of land between Miles Macdonell Collegiate and the Melrose Park Community Centre. On-site parking is limited and often hard to find on busy weekends when the entire branch is busy with members ranging in age from four to 80. To accommodate its small space, a large part of the second-floor addition will be constructed on piles over the east side driveway.

When completed, the fitness room (which includes free weights and exercise machines) will be relocated to the new second level in an area 50 per cent larger than the existing area. A new observation deck will be constructed adjacent to the pool. The existing locker areas will be expanded and a family locker-room will be added. The existing lobby, offices and main floor washrooms will be demolished and replaced with a new lobby and offices.