

May 16
1963



MODERN EQUIPMENT: East Kildonan's equipment now consists of this 625-gallon per minute LaFrance Quadruple Combination pumper (left) purchased in 1960 and a 500-gallon per minute American Marsh Pumper

purchased in 1954. In charge of the pumper at left Saturday morning was Fireman K. Brown, while Fireman L. Cann is at the right pumper. Lieut. G. Smith (centre foreground) was in charge.—R. Lilje-Gren, 750 Kildonan D.

Public Sees Modern Equipment Saturday

East Kildonan Fire Department Dampened First Blaze In 1914

East Kildonan got its first glimpse of its new Fire Department Saturday morning when an inspection and demonstration of equipment was held at the fire station on Watt street.

Hundreds of residents availed themselves of the opportunity of looking over equipment and watched with keen interest as the firemen went through their paces under Fire Chief H. G. Williamson.

East Kildonan has had a Fire Department since 1914.

At that time the fire fighting apparatus was a two-wheeled hand-drawn chemical wagon, which was housed in

an 8x8 building located at Bowman and Watt. This apparatus was manned by volunteers.

In 1920 the municipality purchased two pieces of second-hand equipment from the City of Winnipeg. This consisted of one 100 gallon horse-drawn

water tank in which a soda-acid solution was used. The only hose on this apparatus was 100 feet of one-inch hose.

The second was a wooden stake body wagon, also horse-drawn, with a small ladder attached.

The municipality then purchased 500 feet of 2½-inch hose and one nozzle, which was to be carried on this apparatus.

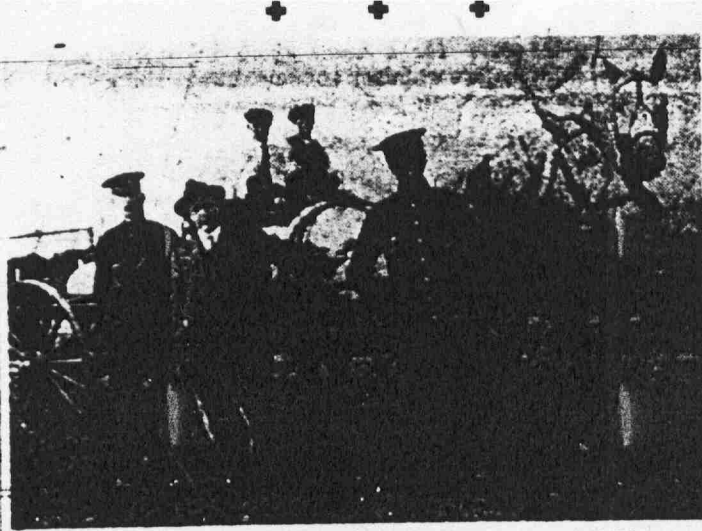
There was one full time fireman during the day, and at night a second man reported for duty.

The station house was located at Munroe and Watt, which was built in 1919, for the Police, Fire, Health and Public Works.

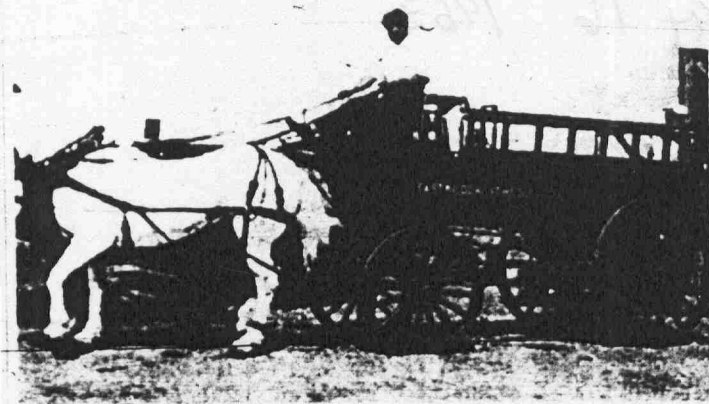
In 1927 a model T-Ford was purchased and the stake body of the hose wagon was mounted on the truck. This gave East Kildonan its first piece of motorized fire fighting equipment.

A big change came in 1939 when East Kildonan purchased a second piece of motorized apparatus — a 1939 LaFrance booster pumper, which carried a water tank of 100 U.S. gallons of water with a body for 1000 feet of 2½-inch hose.

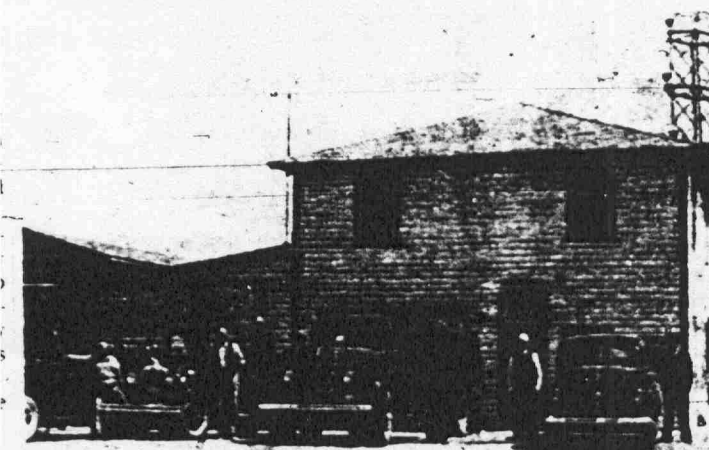




FIRST HORSE-DRAWN EQUIPMENT: East Kildonan purchased this 100-gallon water tank from the City of Winnipeg in 1920. This photo, taken at the Kildonan East Fall Exhibition in 1920 shows, left to right: Police Chief T. Coley; Councillor J. H. Sutherland, chairman of Fire, Water and Light; and Bert Russell. The gentleman seated (white shirt) is Walter Pyper, while the other man is unidentified.



1920 EQUIPMENT: The second piece of equipment purchased from Winnipeg in 1920 was this stake body wagon with small ladder. In 1927 it was placed on a model T Ford giving East Kildonan its first motorized equipment.



STATION HOUSE: The station house, built in 1919, was located at Munroe and Watt and housed the Police, Fire, Health and Public Works.

The station house was located at Munroe and Watt, which was built in 1919, for the Police, Fire, Health and Public Works.

In 1927 a model T-Ford was purchased and the stake body of the hose wagon was mounted on the truck. This gave East Kildonan its first piece of motorized fire fighting equipment.

A big change came in 1939 when East Kildonan purchased a second piece of motorized apparatus — a 1939 LaFrance booster pumper, which carried a water tank of 100 U.S. gallons of water with a body for 1,000 feet of 2½-inch hose and 300 feet of 1½-inch hose.

Working off the tank was 150 feet of one-inch booster hose. Ladders on this truck was a 35-foot extension ladder and a 14-foot roof ladder.

With the addition of the pumper the station had to be made larger, another garage added to the fire station. The manpower was increased to six.

This equipment was in service until 1954. During the early part of that year the municipality saw fit to purchase a pumper unit. They bought a 500-gallon per minute American Marsh Pumper. This truck carried 1,000 feet of 2½-inch hose, plus a 500-gallon water tank.

They were able to use two 150-foot lines of 1½-inch pre-connected hose, and two 150-foot reels of one inch high pressure booster pre-connected hose off the water tank, in addition to being able to use two 2½-inch lines from the pumper.

This pumper carried a 35-foot three section extension ladder and one 14-foot roof ladder.

The fire station was then moved to the present location at 545 Watt street. The staff was now seven full time fire fighters. The 1927 Ford was then taken out of service.

In July, 1955, the Fire Department was integrated with the Police Department and the combined departments was named the Public Safety Department with Chief Constable Chris Einfeld in charge. It was given the responsibility for both police and fire activities.

Some of the firemen were taken into the police and others found employment elsewhere in the City Departments.

In 1960 a 625-gallon per minute LaFrance Quadruple Combination Pumper was purchased. On this apparatus was carried rescue masks and 232 feet of ground ladders.

(Continued on page 6)

Fire Dept. Demonstration

(Continued from page 1)

In hose they are able to carry 1,500 feet of 2½-inch hose, 500 feet of 1½-inch pre-connected hose, and 300 feet of 1-inch high pressure pre-connected booster hose, along with 500 gallons of water. This pumper was custom made to the specification of East Kildonan.

Early in 1963 East Kildonan Council considered that the population and built up areas of the city had reached a stage where a full time Fire Department was essential.

This was prompted to a large extent by the ever-increasing complexities involved in fire fighting that requires intensive training not practicable in a combined department.

Thus the present Fire Department was formed from 16 members of the Police Department who expressed a preference for fire fighting. Among this group were several experienced and trained firemen.

An additional 10 men were engaged and the department now has a strength of 26 full time fire fighters organized into four platoons with a fire chief and a fire prevention

officer.

With good equipment and well trained professional fire fighters to man it, East Kildonan now has good fire protection.

GOOD FOR VEGETABLES

EDMONTON. — The Peace River area of northern Alberta is suitable for commercial vegetable growing, the provincial agricultural department reports. Horticulturist D. W. Smith says 500,000 to 700,000 acres in the area stretching over the British Columbia border are suitable.

"BLACK MAGIC"

**LAWN
DRESSING**

\$2.50 per Yard

**•
RON DAVEY
Ph. LE3-7910**