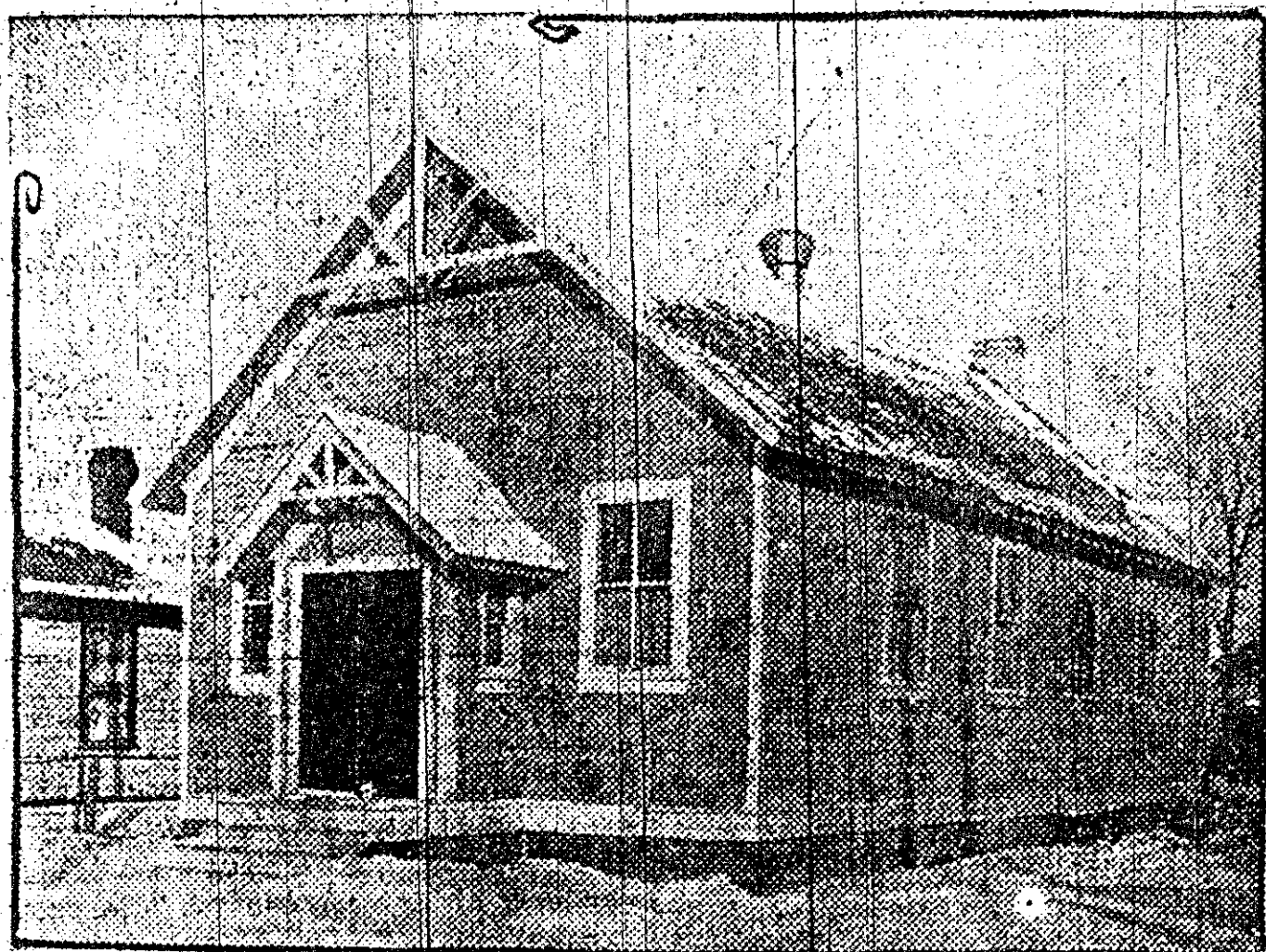


OPENING S. A. CITADEL IN ELMWOOD.



The new Salvation Army citadel in Elmwood, situated on Hespeler avenue, near Kelvin street, will be opened this evening by Lieut.-Col. Turner, territorial secretary. After the building has been declared open a very interesting service will be held.

The opening services will be continued on Sunday at 11 a.m., 3 and 7 p.m., by Lieut.-Col. Turner, assisted by Mrs. Turner, Brigadier and Mrs. Taylor, and others. The Salvation singers will assist in all the services of the week-end. The citadel band will take part in the service tonight, and the citadel boys' band will be present on Sunday evening.

A special programme has been arranged for the next two weeks.

SALVATION ARMY OPENS NEW CITADEL

JANUARY 10 1916

Enthusiastic Gatherings at Inaugural Services in Headquarters at Elmwood.

The past week-end has been a memorable one in the history of the Salvation Army, as it marks the opening of a splendid new citadel for its corps in Elmwood. The building which is situated on Hespeler avenue, near Kelvin, is a frame structure on concrete foundation with a seating capacity of 225. It has been built at a cost of \$2,800, exclusive of lot, which was purchased by the Salvation Army several years ago with a view to extension.

The opening ceremony, simple in character, took place on Saturday evening, when a large and enthusiastic gathering was presided over by Lieut.-Col. Turner, territorial secretary, who was assisted by Brigadier Taylor and a number of other officers. The Citadel band also was present, and enlivened the proceedings with its martial strains of music.

Ministers Extend Welcome.

In addition to a large number of Salvationists, adherents and friends being present, there was also a number of ministers on hand to welcome the Army to Elmwood and congratulate its officers on the splendid edifice erected for its services. Among the latter were Rev. D. N. McLach-

P
a

The
of so
comin
for a
for th
the pr
sants
the v
the g
noon
Garry
the t
Hon.
Brow
Lady
Georg
E. L
Mrs.
Minn
Mr.
Drew
Capt.
Wood
McCo
Miss
Miss
Each
Arch
tia, I
Miss
Mont
Mrs.
Georg
more
Lrna
Miss
Miss
Patto
Read
non
and
st., c
H. M
don,
Sully
Denh
chen
McK
Carte